



# Sinfonia

1

Anders Wesström  
(1720–1781)

Allegro

12

VI. I

*tr*

*f*

18

23

*ff*

28

34

4

*p*

47

*f*

53

*p*

58

*f*

*p*

*f*

*p*

*f*

63

*p*

*f*

*p*

*f*

*p*

71

The bass line of 'The Rose Tree' is written on a single staff in bass clef with a key signature of one sharp (F#). The melody begins with a half note G2, followed by a quarter rest, then a half note F#2, another quarter rest, and a half note E2. This is followed by a series of eighth and sixteenth notes, including a triplet of eighth notes (D2, C2, B1) and a final quarter note G1. The piece concludes with a double bar line.

79

79

79

85

85

85

91

91

Musical notation for exercise 91, bass clef, key of D major, 4/4 time. The melody consists of eighth and sixteenth notes, with some triplets.

95

95

*p*

*f*

103

[illegible]

116

116

*f* *p*

123

123

*p*

135

135

*f*

141

141

Musical notation for exercise 141, bass clef, D major key signature. The exercise consists of five measures. The first three measures each contain a beamed eighth-note scale ascending from D2 to A2. The fourth measure contains a single eighth note D2 followed by a quarter rest. The fifth measure contains an eighth-note scale descending from A2 to D2, followed by a quarter rest.

146

146

146

## 2

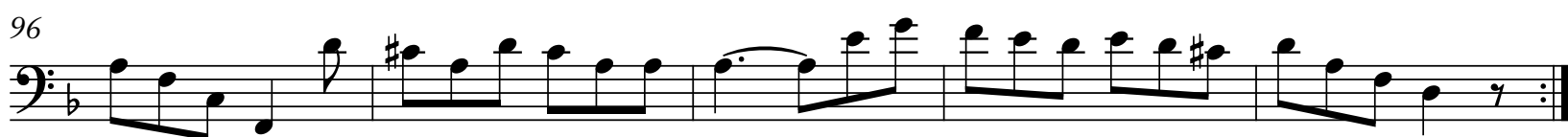
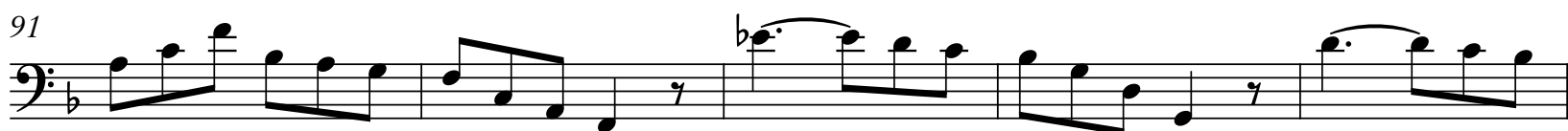
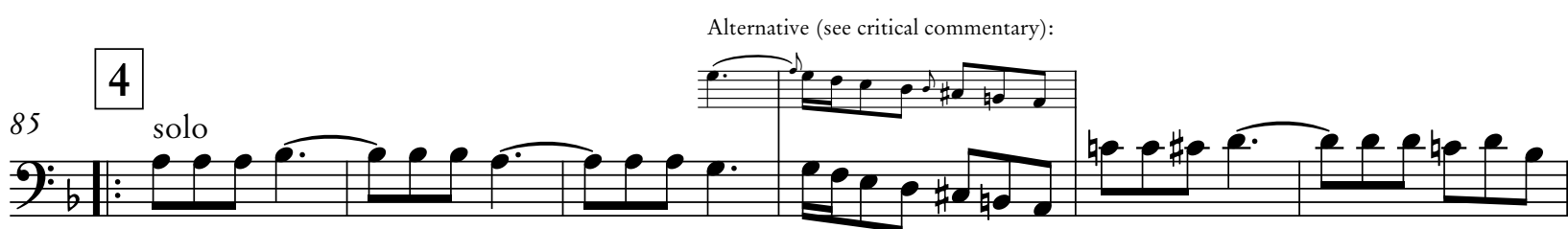
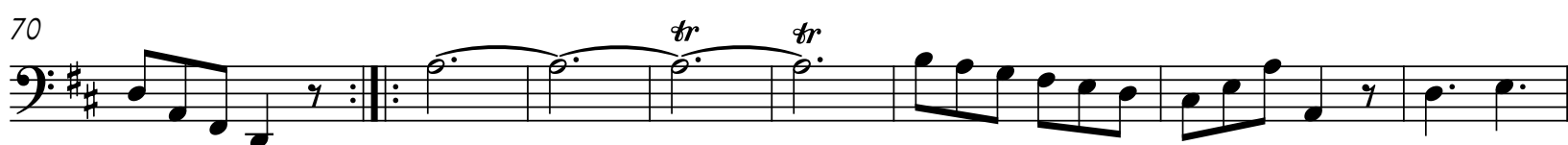
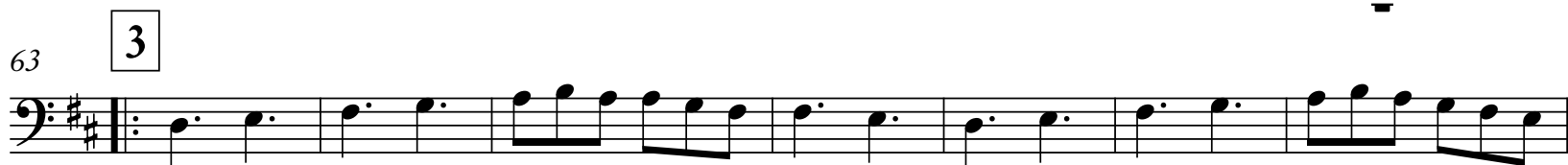
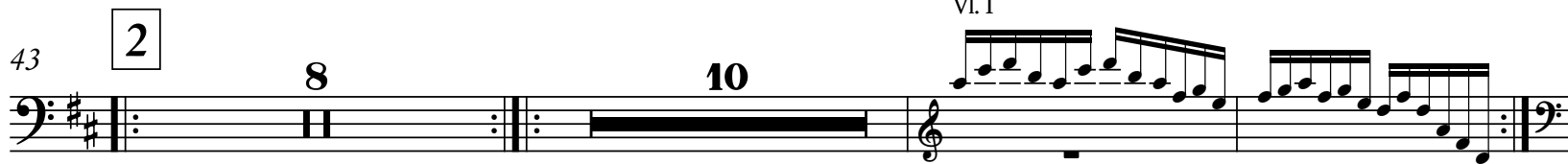
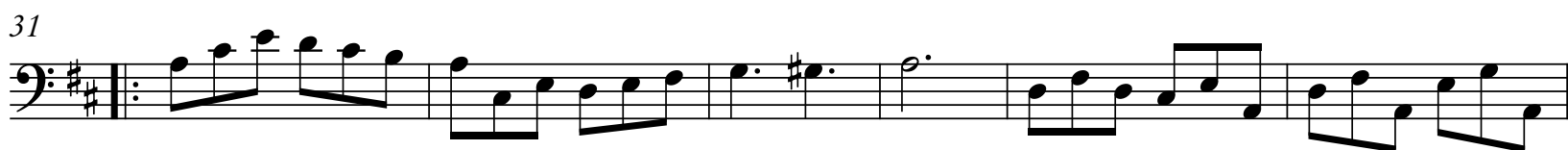
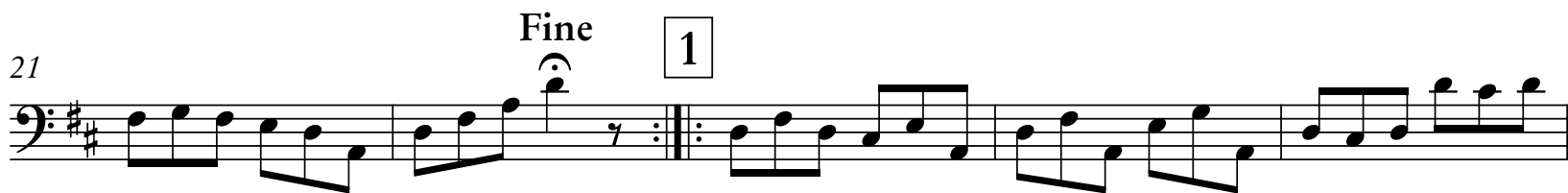
Andante

Musical score for Fagotto I, Andante section, measures 1-35. The score is written in bass clef, 3/4 time, and B-flat major. It features various musical notations including eighth notes, quarter notes, half notes, and rests. Trills (tr) are marked above several notes. A triplet of eighth notes is indicated by a '3' below the notes in measures 10, 25, and 30. The piece concludes with a first ending bracket over measures 32-34, followed by a repeat sign. A second ending bracket starts at measure 35, which includes dynamic markings of *f* and *p*.

## 3

Allegro

Musical score for Fagotto I, Allegro section, measures 1-11. The score is written in bass clef, 6/8 time, and D major. It features eighth and sixteenth notes. A repeat sign is present at the end of measure 6, followed by a double bar line and a repeat sign. The piece concludes with measure 11.



Da capo al fine